

NOTES

- THIS DRAWING IS TO BE READ IN CONJUNCTION WITH ALL ENGINEERS & ARCHITECTS DRAWINGS FIGURED DIMENSIONS ONLY (NOT SCALING) TO BE USED. WHERE A CONFLICT OF INFORMATION EXISTS OR IF IN ANY DOUBT - 'ASK'.
- CONSULTANTS TO BE INFORMED IMMEDIATELY OF ANY DISCREPANCIES BEFORE WORK PROCEEDS.

Emergency 24h Storage Volume Calculation for the whole development

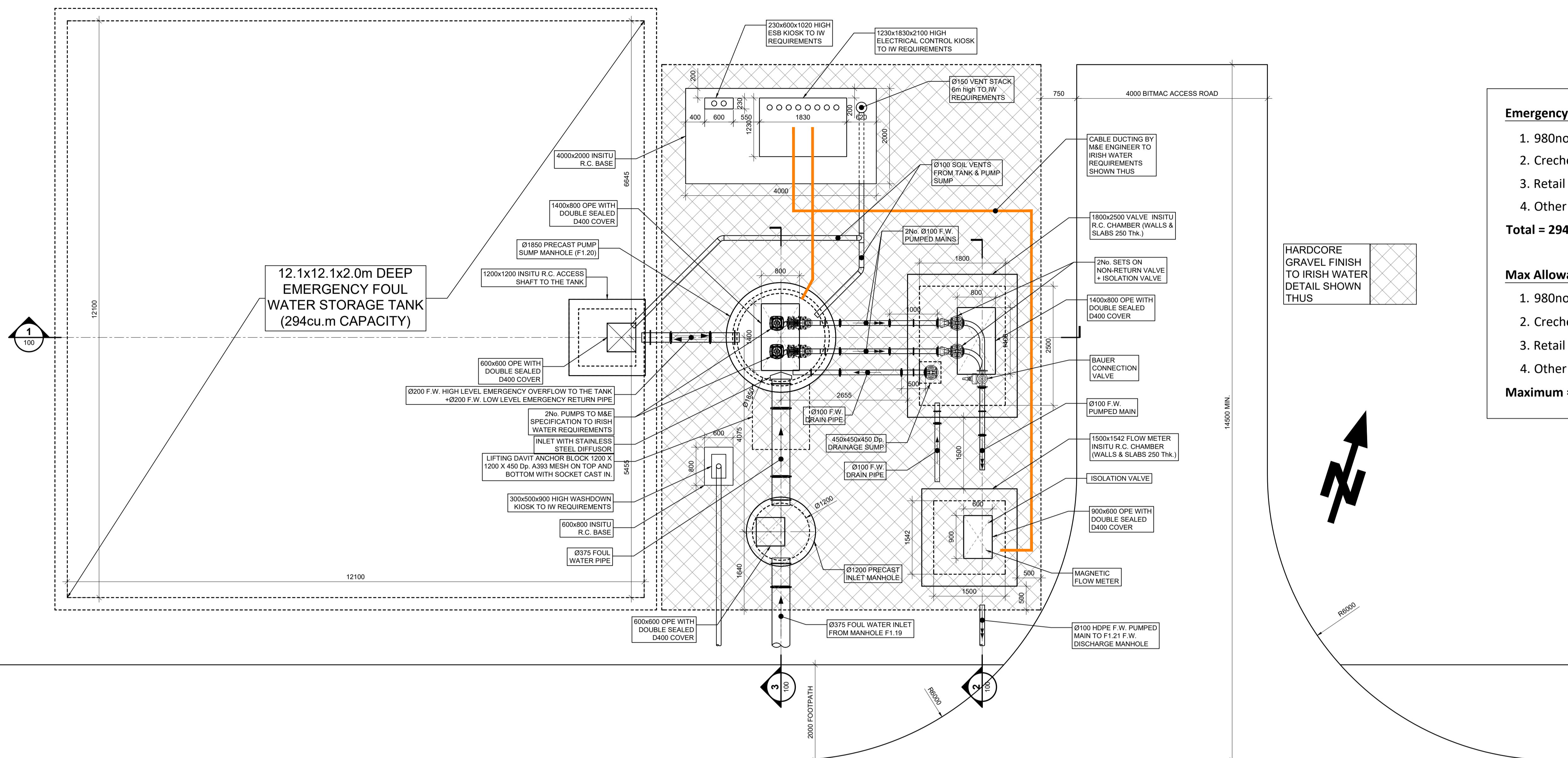
- 980no residential unit storage = $(980-333) \times 0.446/2 + 139 = 283.3m^3$
- Creche (75 children + 15 staff) = $4.9 m^3$
- Retail $1500m^2 = 4.1 m^3$
- Other uses (offices etc) = $2.1 m^3$

Total = 294m³

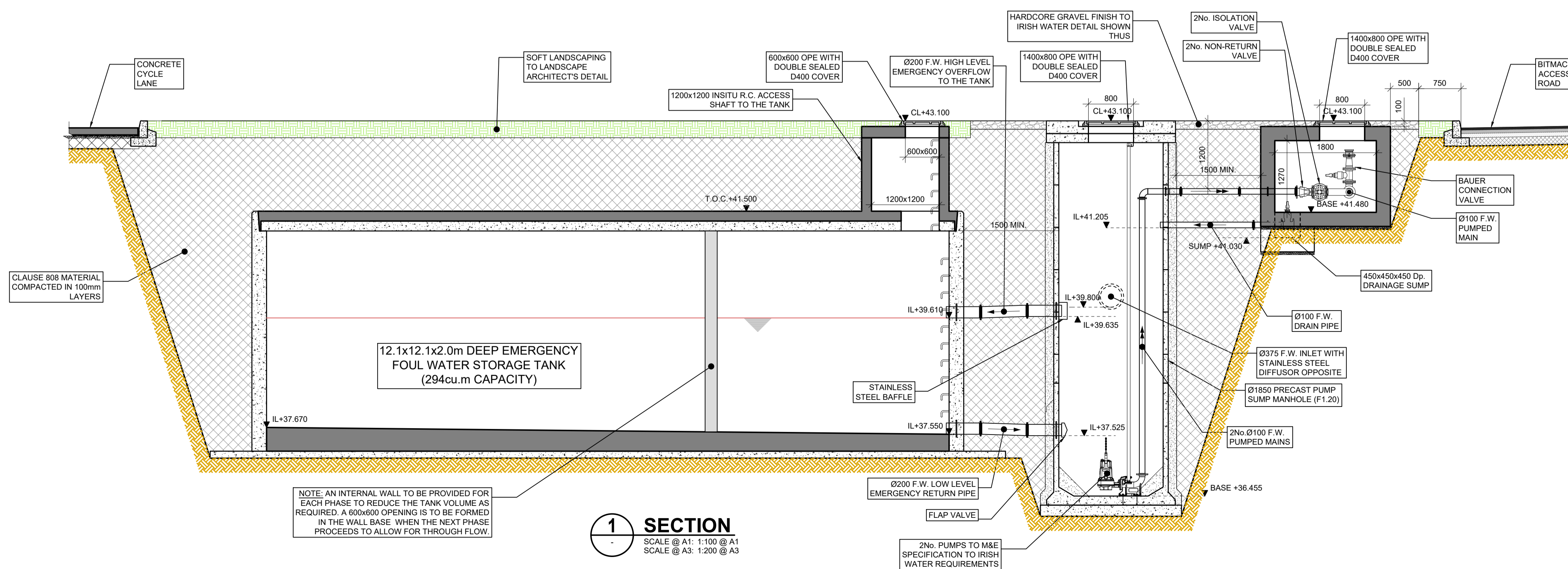
Max Allowable Pump Rate = 3DWF for the whole development.

- 980no residential units 3DWF = $446 \times 980 \times 3 / 3600 \times 24 = 15.1 l/s$
- Creche 3DWF = 0.17 l/s
- Retail 3DWF = 0.10 l/s
- Other Uses 3DWF = 0.05 l/s

Maximum = 15.4 l/s



F.W. LIFTING STATION PLAN DETAILS NOTE: MAX. PUMPED FLOW RATE = 3 DWF = 15.4 l/sec TO IRISH WATER REQUIREMENTS. LIMITATION OF FLOW STEPPED IN LINE WITH PHASING OF THE DEVELOPMENT.
SCALE @ A1: 1:50
SCALE @ A3: 1:100



SECTION 1
SCALE @ A1: 1:100 @ A1
SCALE @ A3: 1:200 @ A3

PL4	09.03.22	ISSUED FOR PLANNING	WK
PL3	17.12.21	ISSUED FOR COMMENT	WK
ISSUE	DATE	DESCRIPTION	BY
Project Engineer:		Project Director:	
PLANNING			
BM			
Dublin Office: Sandwith House, 52-54 Lower Sandwith Street, Dublin 2, Ireland. Tel: (01) 677 3200 Fax: (01) 677 3164 London Office: 5th Floor, Mill House, 8 Mill Street, London SE1 2BA, United Kingdom Tel: (0044) 20 3750 3530 Consulting Engineers, Civil, Structural, Project Management. E-mail: bmce@bmce.ie Web: www.bmce.ie			
CLIENT: LAND DEVELOPMENT AGENCY			
PROJECT TITLE: DUNDRUM CENTRAL DEVELOPMENT			BM PROJECT No: 20.170
MODEL REFERENCE	SUITABILITY	REVISION	
DRAWING TITLE: FOUL WATER LIFTING STATION DETAILS SHEET 1 OF 2			
DWG DRAWING REFERENCE: DCD-BMD-00-00-DR-C-1220	STATUS: PL4	REVISION	